

The logo for ALAMAN, featuring the word in a bold, white, sans-serif font with a stylized 'A' that has a triangular cutout. The background is a solid blue color with a pattern of white, irregular, rounded shapes that resemble a textured surface or a mold. At the top, there are some geometric patterns in a lighter shade of blue.

**ALAMAN**

**TEFLON MOULDS**



► **Item No. 001**

Piece size mm ► 27 x 26 x 11.5  
Piece weight g ► 14  
Pieces kits ► 2 x 10  
Mould size mm ► 320 x 73 x 225



► **Item No. 002**

Piece size mm ► 28.5 x 24 x 11  
Piece weight g ► 14  
Pieces kits ► 2 x 10  
Mould size mm ► 320 x 73 x 225



► **Item No. 003**

Piece size mm ► 24.5 x 24.5 x 11.5  
Piece weight g ► 14  
Pieces kits ► 2 x 10  
Mould size mm ► 320 x 73 x 225



► **Item No. 004**

Piece size mm ► 22.5 x 22.5 x 11  
Piece weight g ► 14  
Pieces kits ► 2 x 10  
Mould size mm ► 320 x 73 x 225



► **Item No. 005**

Piece size mm ► 25.5 x 25.5 x 11.5  
Piece weight g ► 14  
Pieces kits ► 2 x 10  
Mould size mm ► 320 x 73 x 225



▶ **Item No. 006**

Piece size mm ▶ 23.5 x 23.5 x 11.5  
Piece weight g ▶ 14  
Pieces kits ▶ 2 x 10  
Mould size mm ▶ 320 x 73 x 225



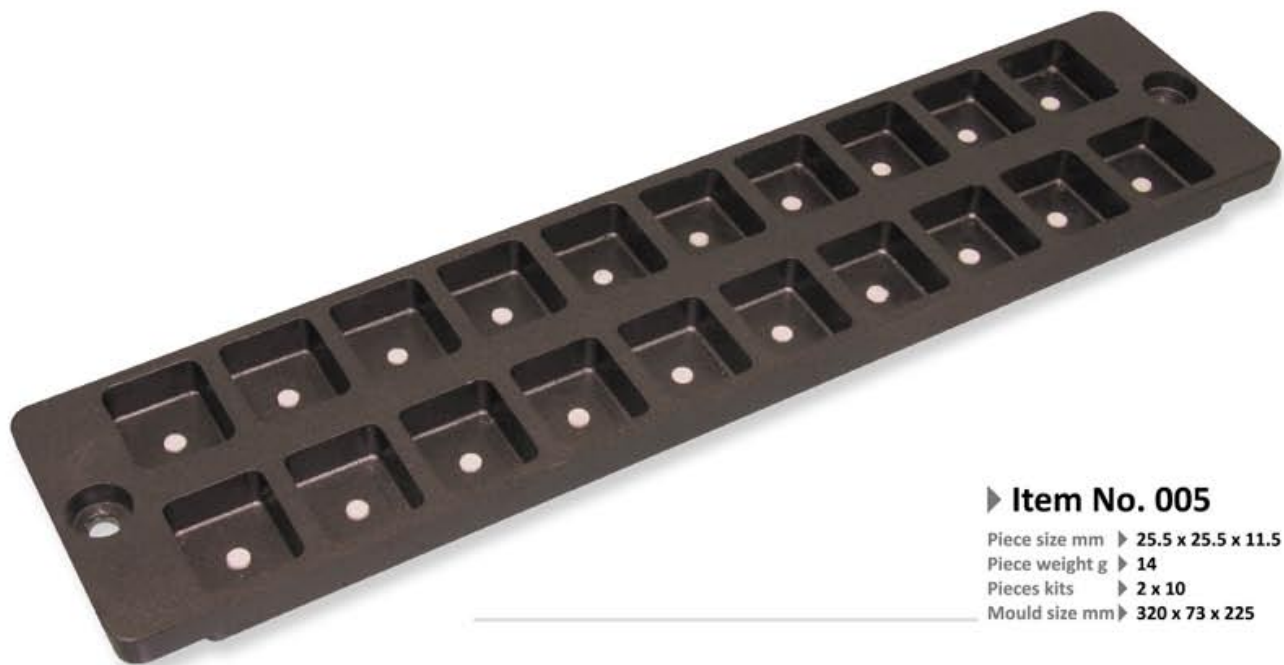
▶ **Item No. 007**

Piece size mm ▶ 27.5 x 22.5 x 11  
Piece weight g ▶ 14  
Pieces kits ▶ 2 x 10  
Mould size mm ▶ 320 x 73 x 225



► **Item No. 004**

Piece size mm ► 22.5 x 22.5 x 11  
Piece weight g ► 14  
Pieces kits ► 2 x 10  
Mould size mm ► 320 x 73 x 225



► **Item No. 005**

Piece size mm ► 25.5 x 25.5 x 11.5  
Piece weight g ► 14  
Pieces kits ► 2 x 10  
Mould size mm ► 320 x 73 x 225



*Be distinctive ...*